

6/7/2020

**SERVICED APARTMENTS NOW AVAILABLE
AT “MIDORI PARK The VIEW” IN BINH DUONG NEW CITY**

BECAMEX TOKYU CO., LTD

BECAMEX TOKYU CO., LTD. (mentioned below as BECAMEX TOKYU) would like to announce the opening of our serviced apartments at “MIDORI PARK The VIEW” (mentioned below as The VIEW) in Binh Duong New City, which is developed by BECAMEX TOKYU.

The VIEW consist of 604 total units has received great interest from the middle-classed homebuyers when the project was launch for sale in September of 2018. To date, the project has sold 504 units while the remaining 100 units are for serviced apartments.

BECAMEX TOKYU directly manages the serviced apartments in the first high-quality apartment SORA gardens I, and targeting customers from the nearby industrial parks. We have received many compliments for our Japanese style management, excellent facilities, and great customer service.

BECAMEX TOKYU will directly manage the serviced apartments of The VIEW. With options ranging from 35m² 1-bedroom apartments to 102 m² 3-bedroom apartments, The View serviced apartments are ideal for corporate customers to families.

Furthermore, The View offers an extensive amenities package that includes a swimming pool, gym, sky lounge, guest room, 24/7 security, shuttle bus to AEON Mall Binh Duong and Ho Chi Minh City. We aim to provide residents with the most comfortable living environment possible.

Please find the information and interior images of “MIDORI PARK The VIEW” in the attachment file.

< For further information about the project, please contact >

BECAMEX TOKYU CO., LTD

Hirata Shuji +84-90-131-6626 (Japanese – English)

Dang Thi Hong Son +84-90-231-7766 (Vietnamese – English)

■ Project information

Name	MIDORI PARK The VIEW
Address	Lot H9- The Modern Urban Zone, Hoa Phu Ward, Thu Dau Mot City, Binh Duong Province, Vietnam
Type	Residential – Commercial
Capacity	604 units
Floor plan	Apartments from 1 bedroom to 3 bedrooms ※Majority 2 bedrooms apartments
Exclusive Area	Approximately 35m ² to 102 m ²
Facilities	Pool, gym, sky lounge, guest room, BBQ terrace, community room, car parking lot, motorbike parking lot...
Structure	Reinforced concrete structure – 24-storey building
Lot Area	9,087 m ²
Total Floor Area	52,000 m ²
Owner	BECAMEX TOKYU CO., LTD
Management	BECAMEX TOKYU CO., LTD
Features	<ul style="list-style-type: none"> ▪ Living environment surrounded with lush landscaping and greenery ▪ Pleasant view to MIDORI PARK's beautiful landscape ▪ Elegant design and high construction quality supervised by Japanese engineers ▪ Security with 24/7 management, surveillance camera ▪ Extensive amenities package and more

■ Serviced apartments information

Capacity	100 units
Type	One-bedroom (35m ²) ~ Three-bedroom (102 m ²)
Rent fee (No tax)	+ For staying short-term : from 850,000 VND per day + For staying long-term (over 6 months): from 800USD per month
Service	<ul style="list-style-type: none"> ▪ Fully furnished, household electrical appliances and dishes ▪ Cleaning for room ▪ Laundry service ▪ Electricity fee (up to 1,000,000 VND / month), water fee. ▪ Internet, cable TV fees ▪ Using of common utilities ▪ Using Shuttle bus to AEON MALL Binh Duong Canary, Ho Chi Minh city ▪ Rental service for Bicycle. <p>※ Contents details of service can be change. Please contact with us for more details.</p>
Operating time	From July 2020

■ Inside apartment pictures



1-Bedroom Apartment (Left: living room. Right: bedroom)



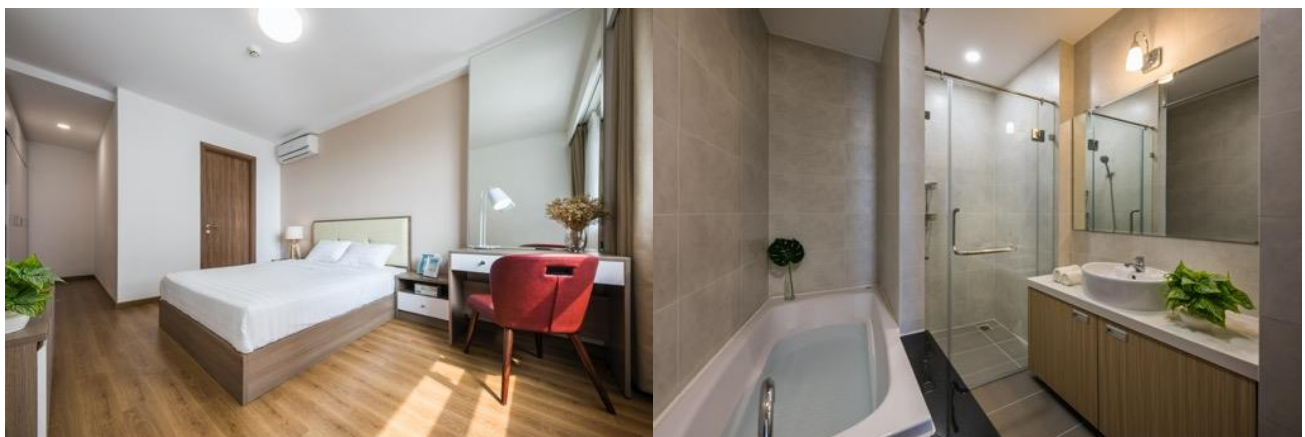
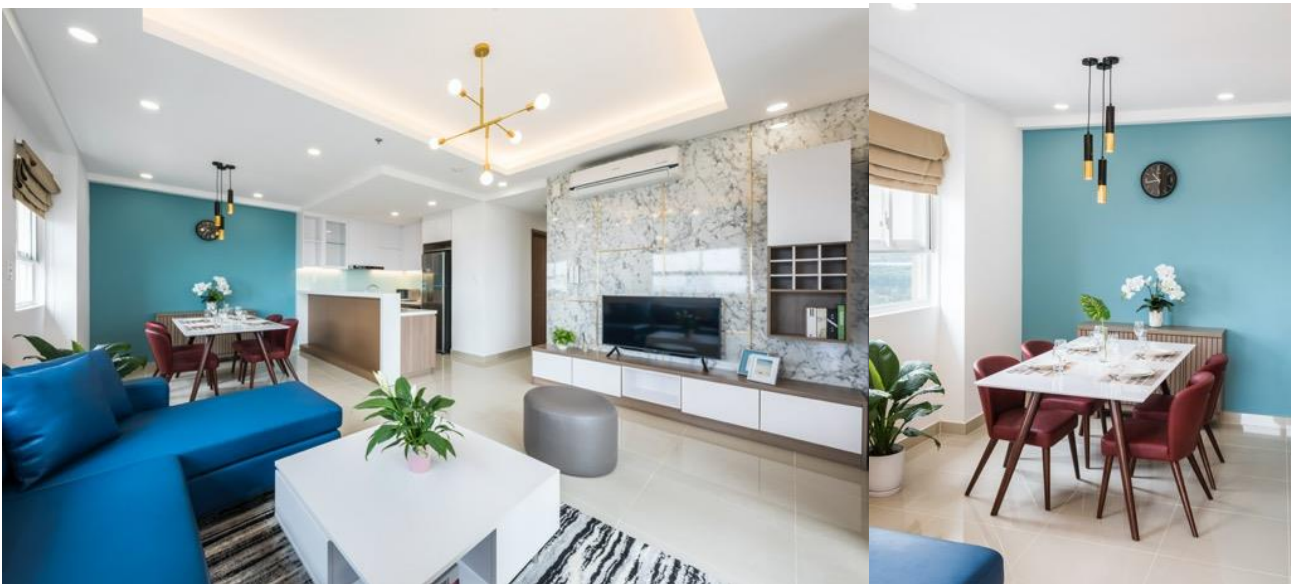
2-Bedroom Apartment (Left: living room. Middle: workroom. Right: dining room)



2-Bedroom Apartment (Left: living room. Right: dining room)



2-Bedroom Apartment (Left: living room. Right: dining room)



3-Bedroom Apartment (Upper left: living room. Lower left: bedroom
Upper right: dining room. Lower right: bathroom)

■ For more information and reservations, please contact
BECAMEX TOKYU CO., LTD

Japanese: +84-91-4487-786 (PIC: Nemoto)

Vietnamese – English: +84-98-8445-064 (PIC: Tran Thi Hong Hai)